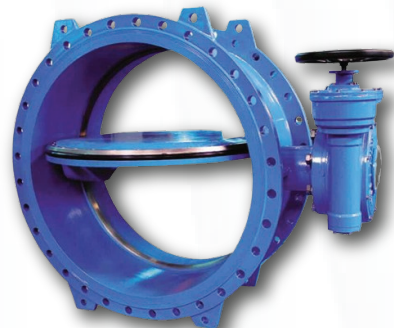




AVB

ENGINEERINGS

A Complete Water Solution





ABOUT US

AVB Engineerings, a quality driven organization & leading supplier of D.I / C.I Valves (Air Release Valves, Gate Valves, Butterfly Valves, Swing Check Valves, Slanted Seat Tilting Disc Swing Check Valves, Flow Control Valves, Surge Release Valves, etc), Gun Metal Valves, MultiJet Meters / Woltman Meters / Electromagnetic Flow Meters (AMR and Non-AMR), D.I Fittings, G.I Fittings, Etc.

We are expertise in supplying superior range of products.

We provide complete solution for the Water Infrastructure (Water Supply, Sewerage, Irrigation Projects and Industrial Applications).

GET IN TOUCH WITH US FOR:

- ☞ Strong base of reputed manufacturers
- ☞ Quality products at competitive price
- ☞ On time Committed delivery
- ☞ Customised service - Right product for right application
- ☞ Solution provider for Surge/Water Hammer
- ☞ We undertake SCADA projects for Monitoring/Controlling the operations.

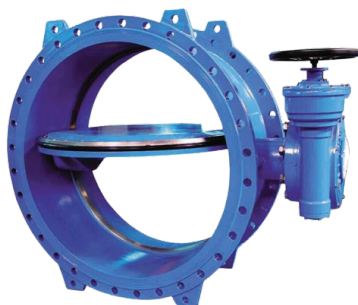
VALVES



DI Gate Valve



DI Air Release Valve



DI Butterfly Valve



DI Swing Check Valve



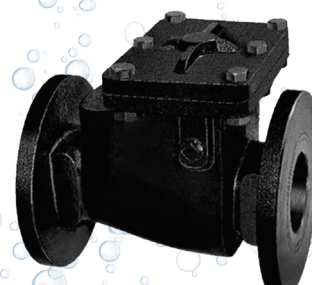
CI Gate Valve



DI Control Valve



CI Air Valve



CI Swing Check valve

METERS



Multijet



Woltman

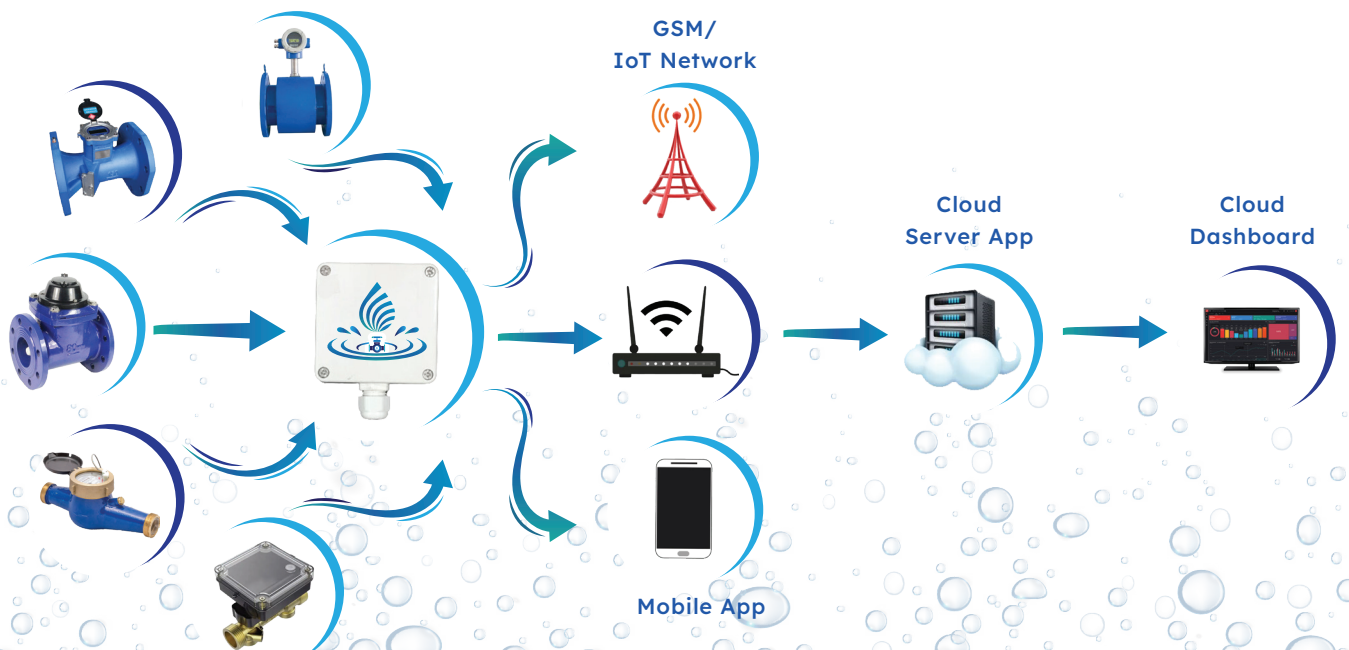


ElectroMagnetic



Ultrasonic

AMR METERS



FITTINGS (CI/DI)



HDPE FITTINGS



GI FITTINGS



SURGE PROTECTION SYSTEM

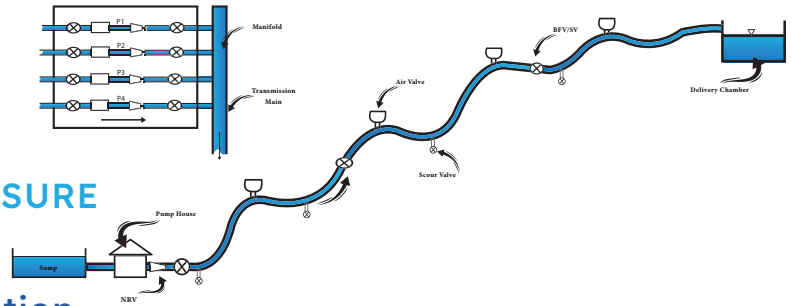
Surge Pressure (Water Hammer) is a phenomena which occurs in water pipelines which is generated by the sudden change in the flow velocity.

FACTORS EFFECTING THE FLOW VELOCITY OF THE SYSTEM ARE:

- ☞ Associated Vacuum
- ☞ Associated Discharge
- ☞ Associated Pressure Difference

ADVERSE EFFECTS OF SURGE PRESSURE

- ☞ Pipe Bursts
- ☞ Heavy damages to pumping station

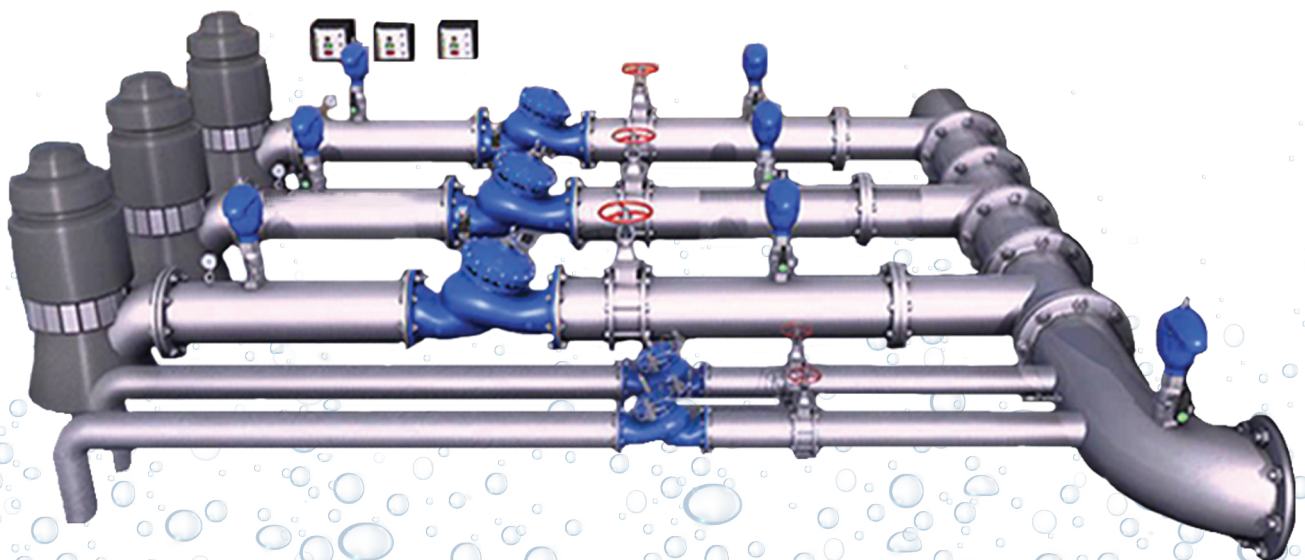


WHERE DOES THIS WATER HAMMER OCCUR?

Water hammer occurs both in pumping main & gravity line but predominantly water hammer occurs in pumping main with the following factors:

- ☞ Pump failure with high pumping head/power Cut
- ☞ Severe undulations in the L section of pumping main
- ☞ Sudden opening/closing of valve etc...

We provide optimistic solutions that protect systems from surge (excessively high pressure caused by pump stoppage or sudden valve closure).

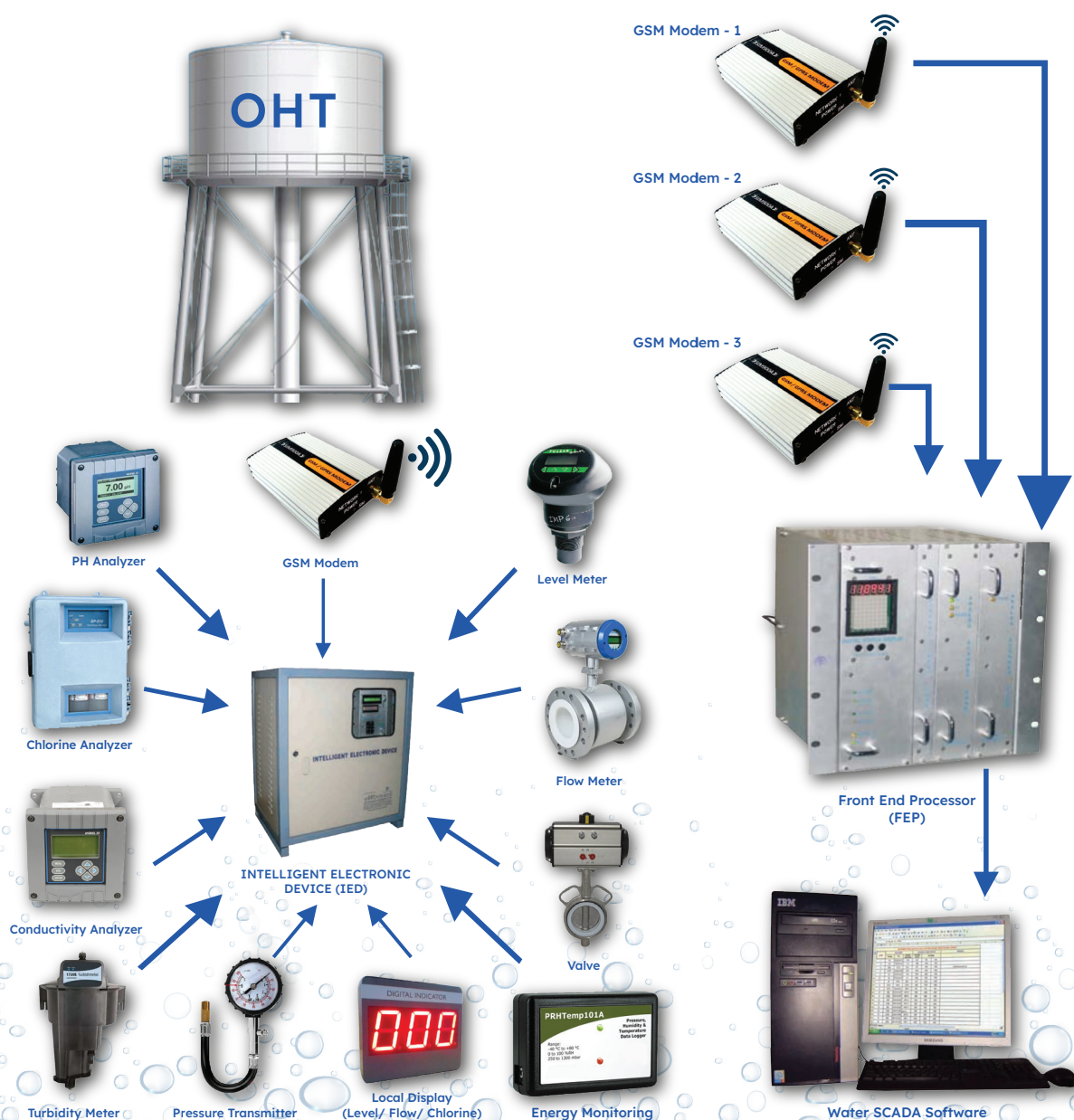


SCADA PLC AUTOMATION

We provide a complete range of PLC, HMI, SCADA & IOT based monitoring and control systems, primary focusing on water Distribution systems to streamline the operation, maintenance, and increase safety for supply network and water quality.

Our smart water distribution systems can be deployed by water utility management firms to proactively manage water, monitor the distribution network, and monetize the value across the service chain. Further, our systems can monitor pressure, valve open/close position, and pollution in the distribution network.

Our systems significantly contribute to the environment by reducing water loss, energy consumption and operational costs.





AVB

ENGINEERINGS

A Complete Water Solution

Contact Us

- 📞 9789 107 127 | 9150 222 622
- ✉ avbengineerings@gmail.com
sales@avbengineerings.com
- 🌐 www.avbengineerings.com
- 📍 25-31, Mandriyappan Street,
New Sidhapudur, Coimbatore - 641044.